

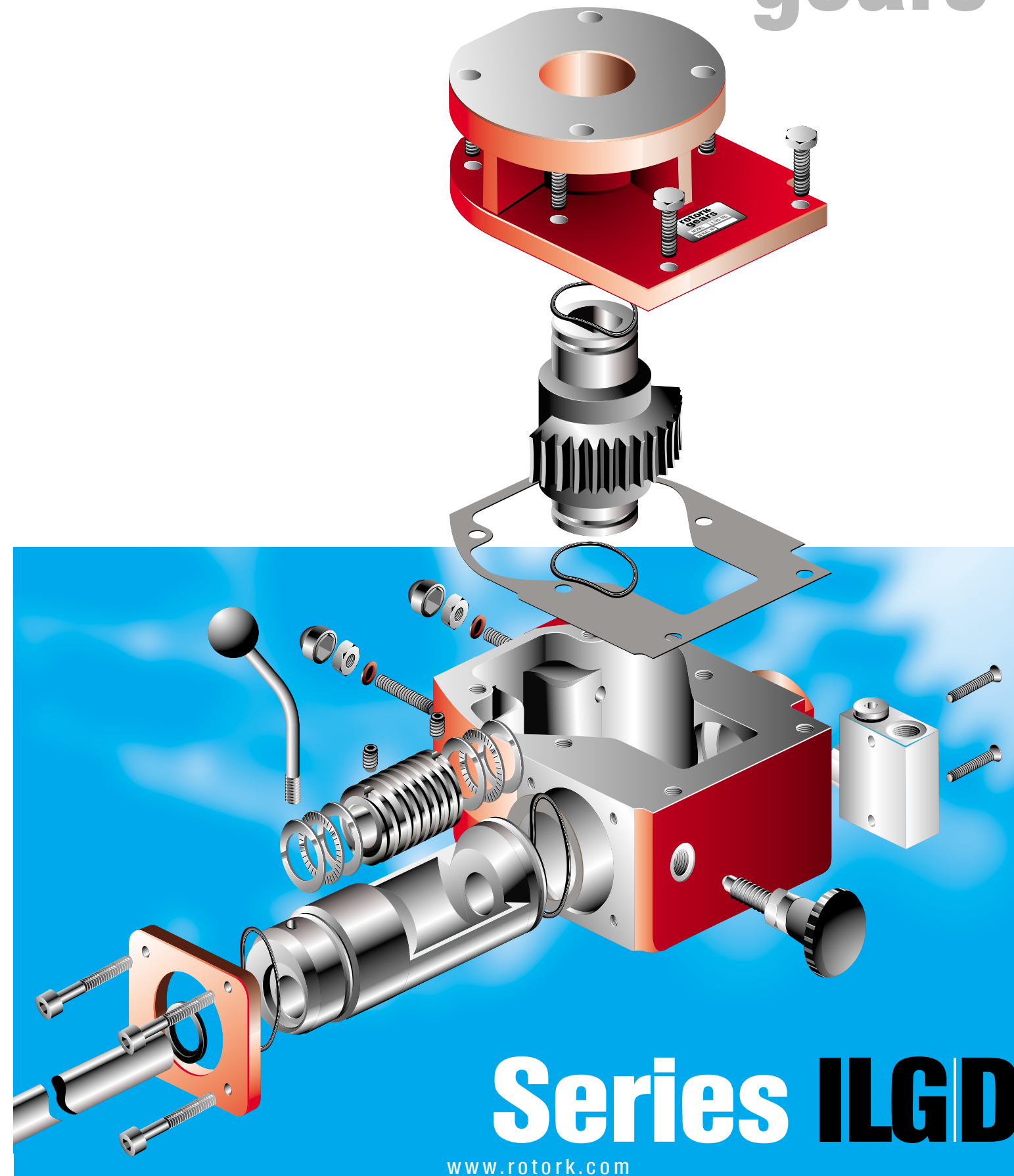
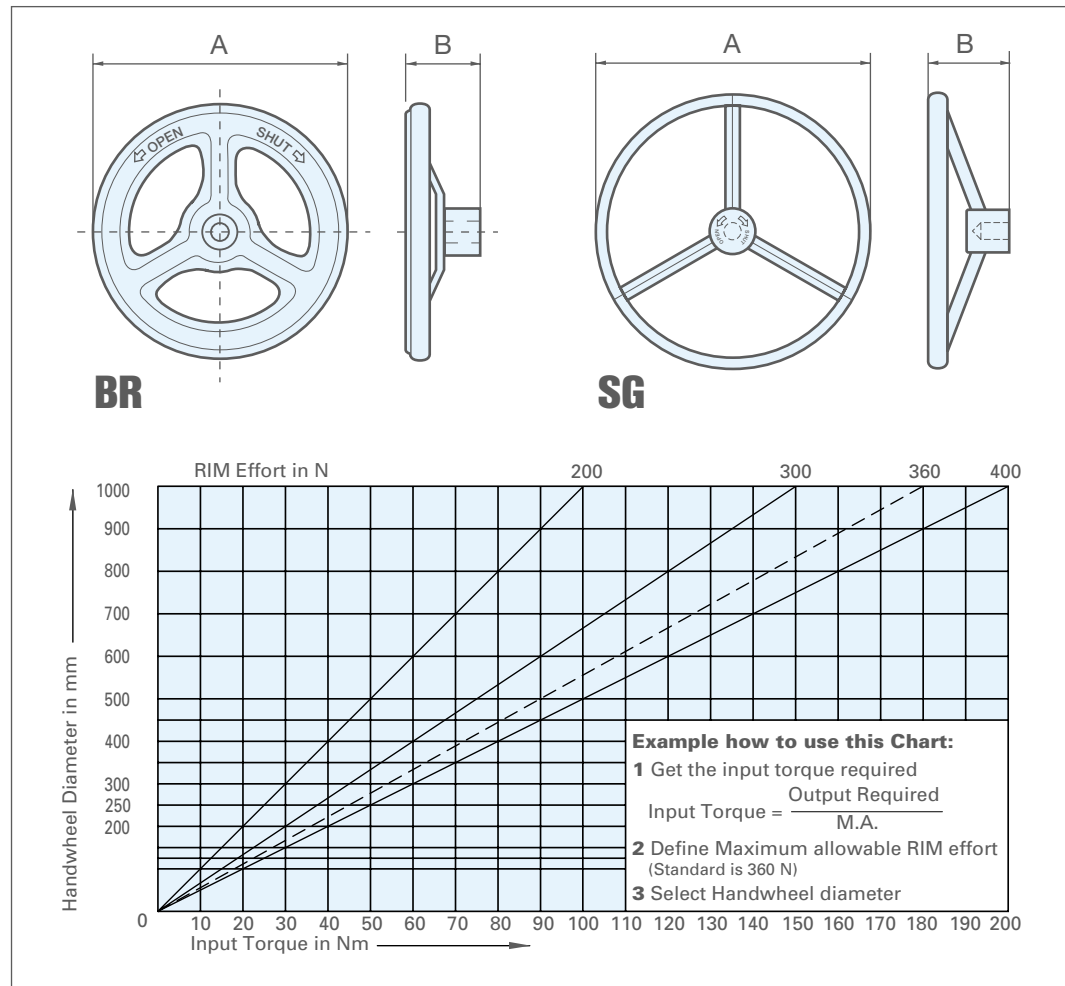
Handwheel Selection Chart

rotork
gears

Input Torque	
Type	M.A. ± 10%
ILG/D 200	9.5
ILG/D 600	12.4
ILG/D 900	11.6
ILG/D 1500	15.4
ILG/D 2400	18.0
ILG/D 5000	28.0

Type	A	B
BR100	∅100	38
BR125	∅125	42
BR160	∅160	48
BR200	∅200	53
BR250	∅250	66
BR315	∅315	68
BR400	∅400	92

Type	A	B
SG200	∅200	80
SG250	∅250	110
SG300	∅300	115
SG400	∅400	130
SG500	∅500	150
SG600	∅600	150
SG700	∅700	150
SG800	∅800	150
SG900	∅900	160
SG1000	∅1000	160



Series **ILGD**

www.rotork.com

<p>Rotork Gears BV Nijverheidstraat 25 7581 PV Losser P.O. Box 98 7580 AB Losser The Netherlands Phone: +31 (0)53 - 5388677 Fax: +31 (0)53 - 5383939 E-mail: info@rotorkgears.nl</p>	<p>Rotork Gears UK / Exeeco Regina House Ring Road Bramley Leeds West Yorkshire LS13 4ET England Phone: +44 (0) 113 - 205 7276 Fax: +44 (0) 113 - 256 3556 E-mail: sales@rotorkgears.co.uk</p>	<p>Rotork Valvekits Brookside Way Nunn Park Huthwaite Nottinghamshire NG17 2NL England Phone: +44 (0) 1623 - 440211 Fax: +44 (0) 1623 - 440214 E-mail: sales@rotorkvalvekits.co.uk</p>	
---	---	---	--

Series ILG/D

rotork gears

www.rotork.com

Description

The Rotork Gears ILG/D gear operators are designed to provide a means of manually overriding pneumatic valve actuators in power and process applications. These gear operators employ a declutchable design for use with double acting actuators. To ensure long life, the housing is sealed to IP65 and the inputshaft is made from Stainless Steel.

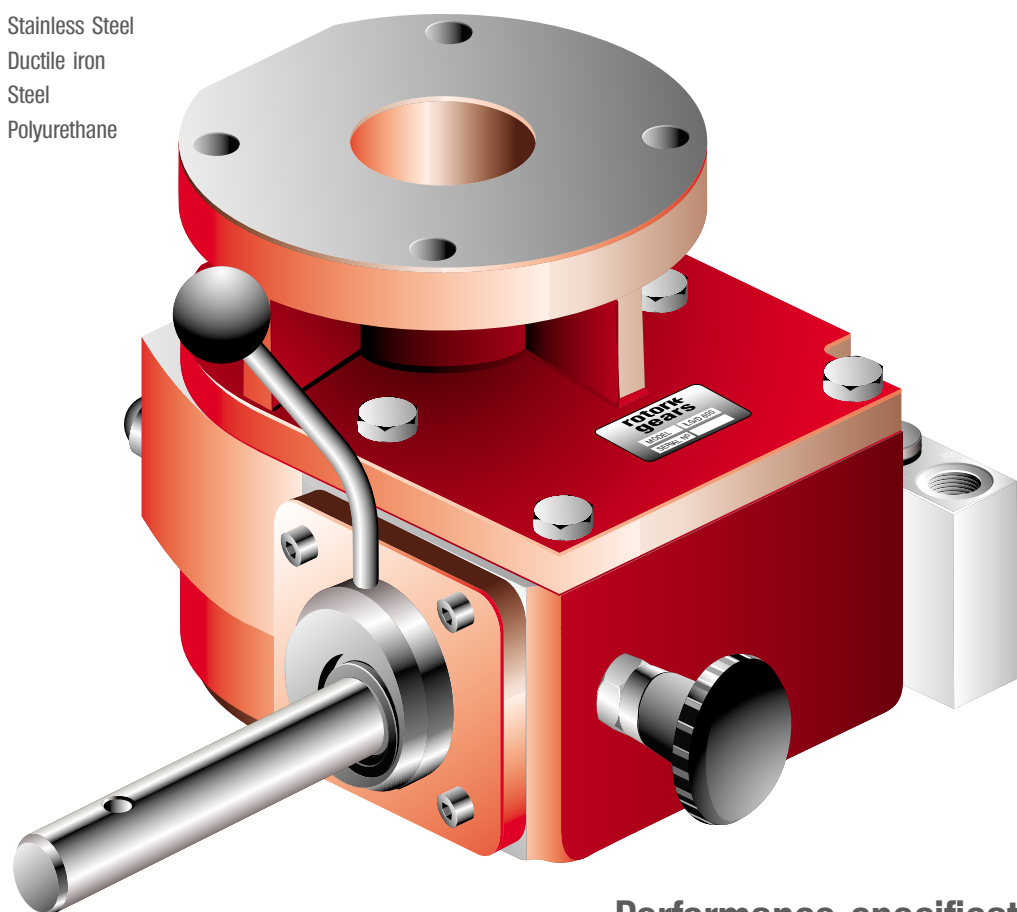
Applications

The Rotork Gears series ILG/D operators are used in all industries where reliable manual operation of double acting actuators is required. All units mount between the valve and actuator and may be supplied with an ISO drive shaft.

Materials

- Housing: Cast iron
- Input shaft: Stainless Steel
- Gear segment: Ductile iron
- Stroke Adjusters: Steel
- Coating: Polyurethane

As an option, a 3/2 spool valve can be fitted, to automatically evacuate air from the actuator when the manual override lever is engaged.



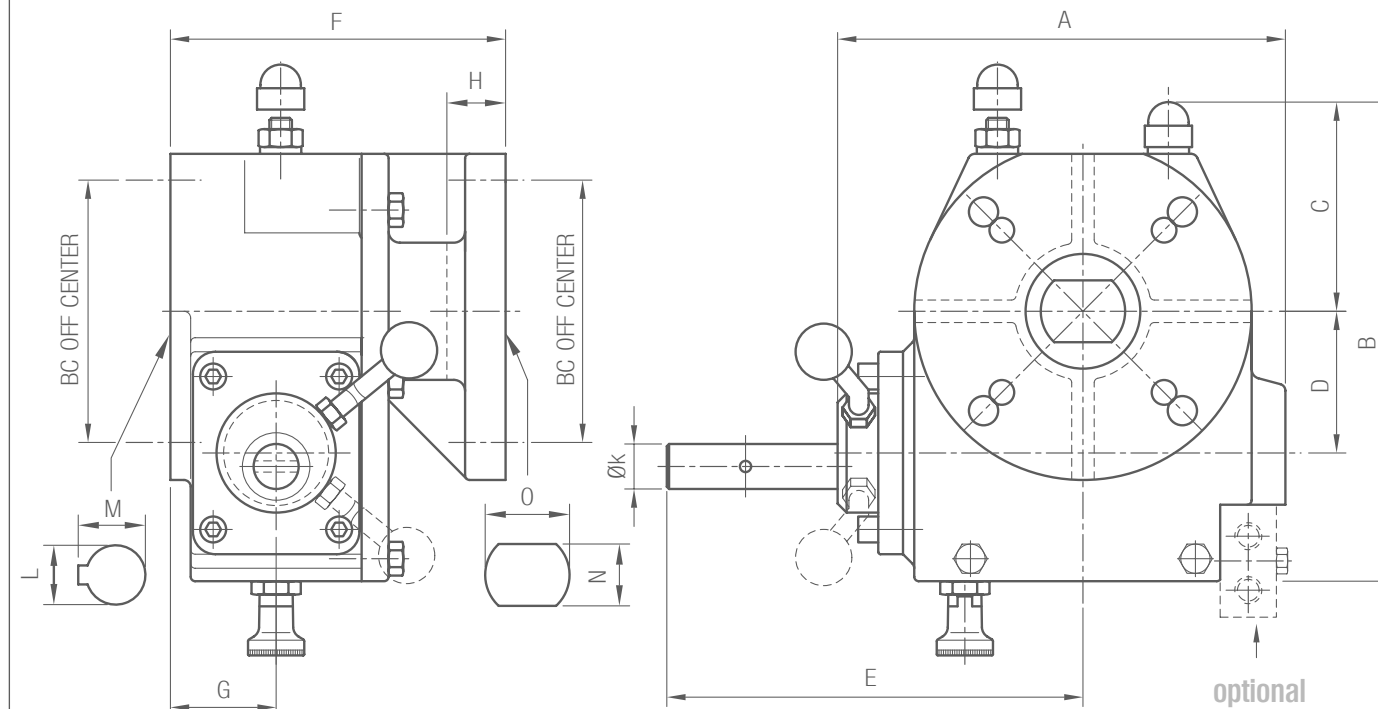
Features

- Cast iron housing
- Rugged construction
- Axial needle bearings
- Sealed to IP65
- Polyurethane coating
- Integral top flange (ISO drive coupling available if required)

Performance specification

- Stroke: 0 - 90° (± 5° adjustable)
- Enclosure: Sealed to IP65
- No. of Models: 6
- Torque Range: 250 to 7450 Nm (2210 to 65560 lbf.in)
- Temperature: -20 to +120°C (-4 to +250°F)

Gearbox ILG/D Series



Gearbox in closed position

Type	H	N x O	L	M
ILG/D 200	20 (0.79)	DD22 x Ø30 (0.87 x 1.18)	Ø 31.15 (1.23) key 6.35 (0.25) pos. C	35.5 (1.40)
ILG/D 600	29 (1.14)	DD25 x Ø35 (0.98 x 1.38)	Ø 45.30 (1.78) key 10 (0.39) pos. C	48.6 (1.91)
ILG/D 900	27 (1.06)	DD35 x Ø50 (1.38 x 1.97)	Ø 54.00 (2.13) key 16 (0.63) pos. C	58.3 (2.30)
ILG/D 1500	26 (1.02)	DD45 x Ø60 (1.77 x 2.36)	Ø 60.00 (2.36) key 18 (0.71) pos. C	64.4 (2.54)
ILG/D 2400	32 (1.26)	DD50 x Ø75 (1.97 x 2.95)	Ø 75.00 (2.95) key 22 (0.87) pos. C	79.9 (3.15)
ILG/D 5000	13 (0.51)	DD60 x Ø80 (2.36 x 3.15)	Ø 90.00 (3.54) key 32 (1.26) pos. C	97.4 (3.83)

Type	A	B	C	D	E	F	G	Øk	Valve Connection BC acc. ISO 5211	Actuator conn. BC acc. ISO 5211
ILG/D 200	154 (6.06)	150 (5.91)	60 (2.36)	50 (1.97)	158 (6.22)	120 (4.72)	40 (1.57)	15 (0.59)	F07	F07
ILG/D 600	195 (7.68)	211 (8.31)	91 (3.58)	61 (2.40)	188 (7.40)	143 (5.63)	47 (1.85)	15 (0.59)	F07/F10/F12	F10/F12
ILG/D 900	222 (8.74)	248 (9.76)	105 (4.13)	85 (3.35)	189 (7.44)	160 (6.30)	48 (1.89)	20 (0.79)	F10/F12/F14	F10/F12/F14
ILG/D 1500	250 (9.84)	289(11.38)	121 (4.76)	108 (4.23)	233 (9.17)	172 (6.77)	51 (2.01)	20 (0.79)	F10/F12/F14/F16	F12/F14/F16
ILG/D 2400	290 (11.72)	330(12.99)	126 (4.96)	127 (5.00)	244 (9.61)	190 (7.48)	61 (2.40)	25 (0.98)	F12/F14/F16	F14/F16
ILG/D 5000	340 (13.39)	384(15.12)	148 (5.83)	155 (6.10)	275(10.83)	205 (8.07)	70 (2.76)	25 (0.98)	F16/F25	F16/F25

Type	Max. bore for insert	Max. bore for quadrant	Max. stem height
ILG/D 200	Ø20 (0.79) [1]17 (0.67)	not	47 (1.85)
ILG/D 600	Ø30 (1.18) [1]24 (0.94)	not	58 (2.28)
ILG/D 900	Ø40 (1.57) [1]32 (1.26)	Ø54 (2.13) [1]42 (1.65)	66 (2.60)
ILG/D 1500	Ø44 (1.73) [1]36 (1.42)	Ø60 (2.36) [1]48 (1.89)	71 (2.80)
ILG/D 2400	Ø58 (2.28) [1]46 (1.81)	Ø73 (2.87) [1]59 (2.32)	92 (3.62)
ILG/D 5000	Ø70 (2.76) [1]55 (2.17)	Ø90 (3.54) [1]73 (2.87)	113 (4.45)

Type	Ratio	Torque Nm (lbf. inch)		M.A ± 10%	Weight Kg. (Lb.)
		Output	Input		
ILG/D 200	35:1	250 (2210)	26 (230)	9.5	8.5 (18.7)
ILG/D 600	46:1	750 (6640)	60 (530)	12.4	17 (37.4)
ILG/D 900	43:1	1450 (1105)	125 (1108)	11.6	21 (46.2)
ILG/D 1500	57:1	2485 (22000)	160 (1420)	15.4	34 (74.8)
ILG/D 2400	68:1	3390 (30000)	188 (1665)	18.0	54 (118.8)
ILG/D 5000	104:1	7450 (66000)	266 (2355)	28.0	80 (176.0)